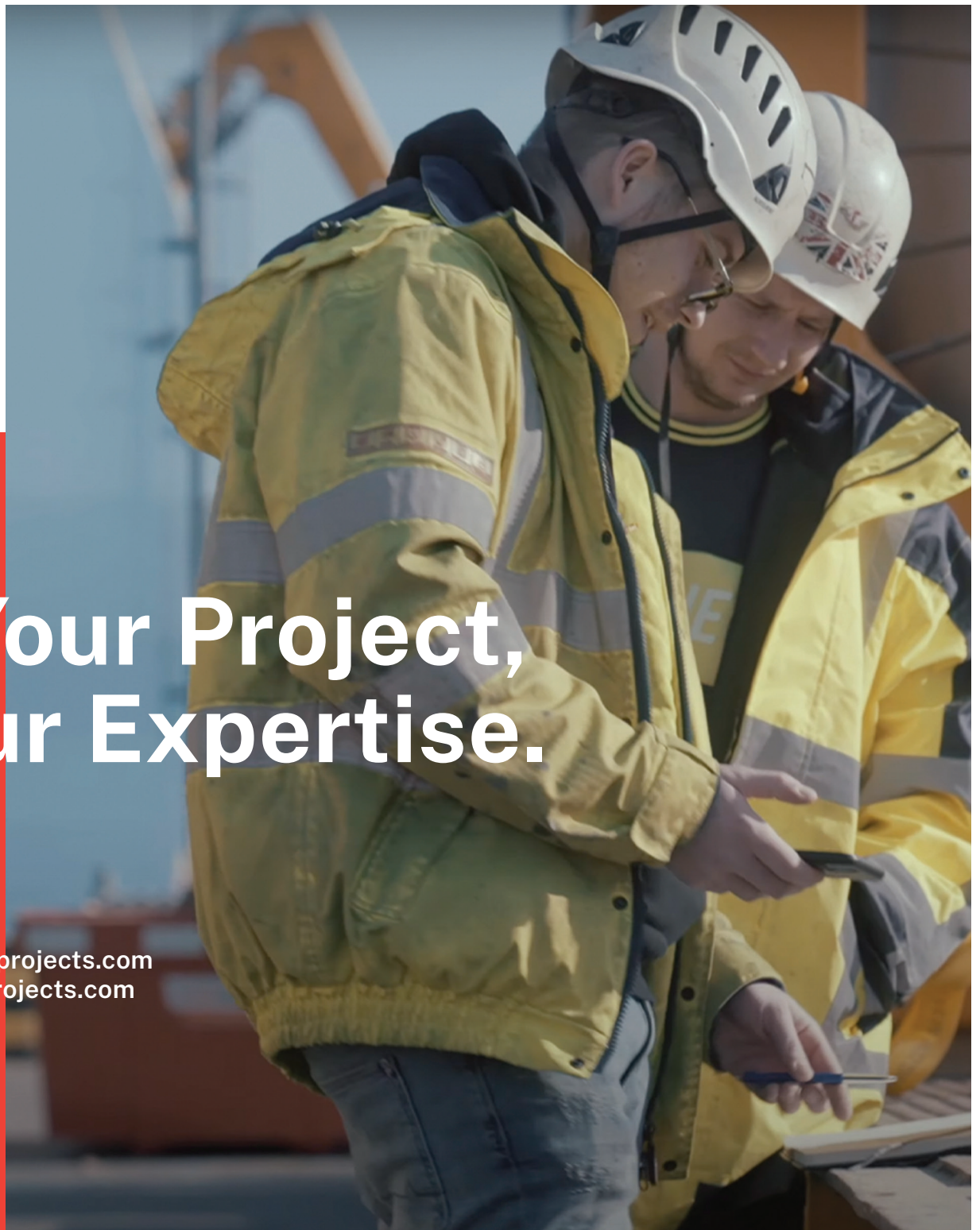


# Aprojects

- Your Project,  
Our Expertise.

[sales@aprojects.com](mailto:sales@aprojects.com)  
[www.aprojects.com](http://www.aprojects.com)



# Aprojects

*Founded in 2005, Aprojects profiles itself as a global logistics service provider with comprehensive turnkey solutions for complex logistics supply chains. The company's innovative approach is supported by a range of services and an international presence. For example, Aprojects provides the energy and transportation sectors with creative logistics solutions while meeting sustainability goals. As a result, Aprojects, offers end customers significant added value, including significant logistics benefits for their global procurement, efficiency gains and reduced operational costs. Aprojects' vertically integrated turnkey solution unites all critical supply chain elements to provide international customers with a "tailor-made" service.*

*The company is now using its know-how, modular logistics architecture to rapidly expand into other key markets, such as zero-emission transportation solutions. Learn more at: [www.Aprojects.com](http://www.Aprojects.com)*

**Specialized  
employees**

**150**

**Warehouses Worldwide  
(105.000m<sup>2</sup>)**

**22**

**Global Offices  
(HQ Antwerp)**

**12**



# Investments

<b>Building size</b>	2x modules of 8000 sqm & 1x module of 4000sqm
<b>Rent</b>	Upon request
<b>Height</b>	Warehouse 12m
<b>Water depth</b>	12 Meters
<b>Electric</b>	220 volt – 400Amp – 3 phase 4 wire
<b>Sewer</b>	Public with a forced main
<b>Doors</b>	8 doors
<b>Heavy lift gate</b>	30x12m gate
<b>Overhead doors</b>	2 pcs 10x8m OOG doors
<b>Availability</b>	Immediately

-  
**Total of  
 20 000 sqm**

## Key Features

Easy access from all major EU highways  
 Complete intermodal connection to inland EU  
 160 acres site new state of the art deep sea terminal  
 20 000sqm covered warehouse solutions

## Demographics

Direct access towards Europe inland waterway canals  
 Close proximity to Europe vast industrial regions





# Turnkey Projects Ocean, Road & Airfreight Solutions

Specific to project requirements, Aprojects provides bespoke door-to-door logistical solutions for each type of equipment ranging from the smallest components up to the largest of Heavy Lifts in complex development sites. Our customer projects are often related to Energy (power plants), Renewable(Hydro/solar/wind) and Infrastructure (chemical plants/ production plants/mining/road). Aprojects dedicated teams manage through control tower processing, front/end traceability of each individual components.

As from FEED status we develop & support our customers with stable cost-efficient sourcing lanes and overall budget optimized logistical flows, as well alternatives taking into account lead times on PO level.

## Multi Unit Production & Processing Plants

On large scale projects with multiple units such as power & processing plants, wind farms, fertilizer or steel mills, we have dedicated teams across the units optimizing logistical solutions assuring targeted milestones across the entire site planning. The solutions, but not limited to, are provided directly at our global marshalling yards or deep-sea terminals for transparent consolidation and controlled last mile delivery – from OEM to site.

Often our last marshalling yard is on site for quality control and release by site's demands therefore minimizing risks, damages and shortages during installation. Thus, providing total digital line of sight on each component.

## Procurement Excellence for OEM'S Direct

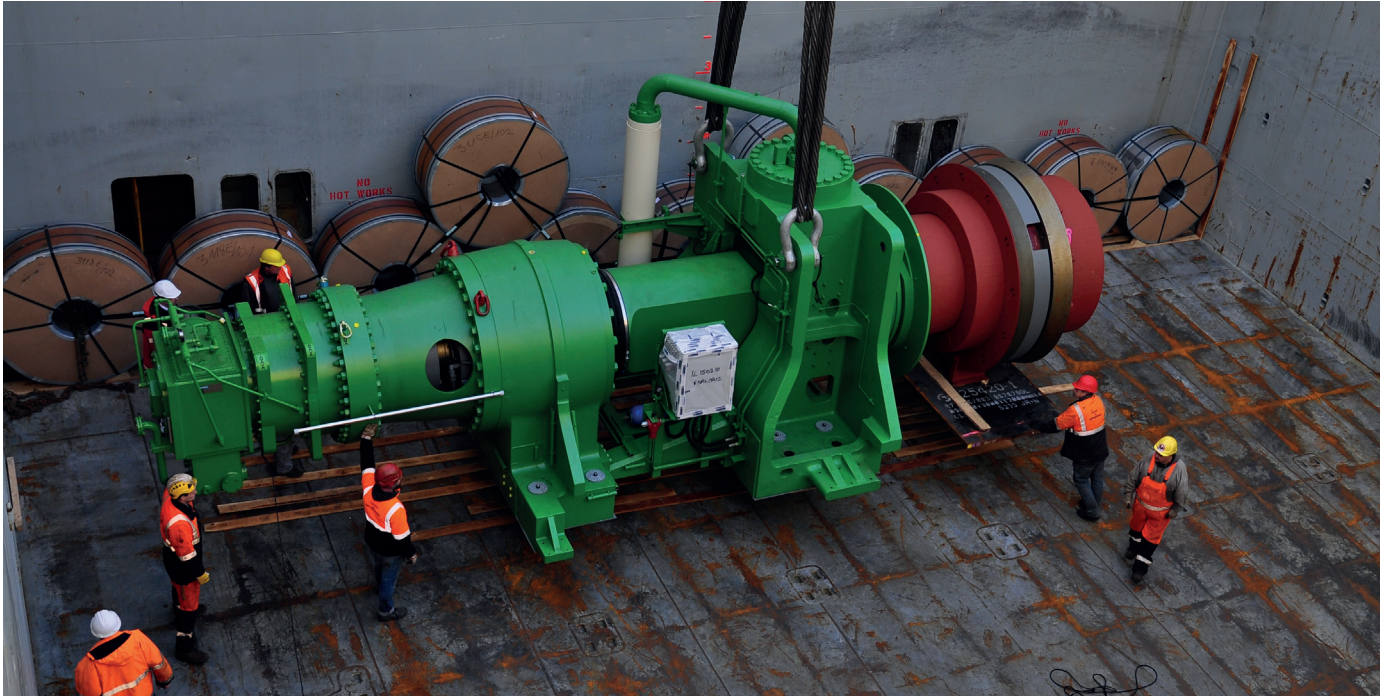
Optimize logistical costs while driving increased quality. Through custom data analytics and years of field-proven experience, we review your global supply chain and optimize it together with you. From product sourcing to on-time delivery at the installation site. Our goal is to learn about your inherent challenges, develop a project execution program, review it with your team before shipments begin. This allows us to create a collaborative environment across teams and optimize logistics costs in unprecedented markets.

Identifying, containing, and implementing corrective actions before product ships to you or your customer makes a significant impact on operational excellence. With our global footprint, we regularly place Aprojects staff within suppliers of our customers to manage final equipment inspections, document export packaging compliance, and begin sequencing of shipments to your requested destination. All data gathered is documented in Aprojects secured DataLake with our proprietary app and can be accessed 24/7 by our customers, on-demand.

## Chartering

As competitive brokers, our team of professionals will act as intermediaries / negotiators between our clients (Charterers) and our database of vessel owners to arrange ocean transport of goods and commodities by sea, and to finalize the employment of a vessel with the best possible terms to meet the individual needs of both parties.

Our typical services include marketing of tonnage (Ships) to customers / shippers / charterers, negotiating spot / time charterers, setting up and negotiating deals, negotiating the main terms of a contract and concluding and preparing the final governing charter party. We then follow the shipment through from start to finish to ensure a smooth shipment is completed.



## Full-, Part-, Voyage- and Time Charters

Through a strong contracting base, we provide a wide and global trading platform for a variety of companies and organizations that are supplying or buying material that is supplied over an extended period. It is also a great option for financial institutions or trading organizations that have a need to achieve a guaranteed freight level to offset any market fluctuation risk.

## Transport Engineering, Marine Surveys & Quay / Supercargo Services

- Engineer & build transport solutions (Ship, road, rail)
- Liaising with ports
- Organize and coordinate stevedoring, lashing and welding crews
- Supporting agency activities Organize & provide surveys Coordinate with insurers and other cargo interests
- Cargo engineering incl. lifting/lashing plans & drawings, method statements, load spreading



**Creative Solutions  
Are Key**



# Marshalling Yards & Warehouses

We provide strategic marshalling yards & warehouses in various deep seaports around the world. With these facilities we are able to consolidate your export cargo as well as store your import cargo temporarily before delivering it to the project site. Our yards are further suited to Heavy Lift handling, ancillary maintenance services, packing, repacking, shrink wrapping, repairs or quality assessments.

To keep track of your stock from supplier through the marshalling yard to site we provide a multi-layer inventory management. Daily inventory and stock communications towards procurement, logistic leaders and site managers are a must. Through bespoke services & resources we provide high quality yard & warehouses suitable for short and multi-year projects.

## Bonded Warehousing

For long lead projects we provide dedicated bonded solutions to extend VAT regulations and tax optimization. In these warehouses/yards, “last mile” engineering and manufacturing are possible to minimize pre-carriage charges from supplier, OEM to port of export.

Bonded locations or FTZ are the perfect place suitable for transition of cargo or title transfers.





# Transportation

## General Cargo, Consumer Goods & Project Cargo

Suited best for the commodity and customer targets, we provide a multimodal platform guaranteeing high frequency and reliable transit times. From door to door each mode of transport, such as barges, rail and road are seamlessly interlinked and interchangeable.

## HL & OOG (Heavy Lift, Out of Gauge)

Through an extensive expertise in multimodal transport, we provide high end technical solutions to our customers in each major industry around the world.

Cost-efficient solutions supported with performance engineering is key to our customers' success. A vast array of trailers, pontoons, RoRo, barges and other heavy transport equipment is available to support your transport challenges.

## HAZMAT - Dangerous Cargo

Where others might avoid the transportation of Hazmat, we embrace the challenge relying on our years of experience, qualified, certified and monitored processes.

From solids to liquids, variable classifications, repacking and documentation, full bespoke services are provided direct in specialized warehouses.





## Inventory Management

A fully driven multi-layer inventory management on a global scale provides our customers with the visibility to keep procurement and the overall logistics budget under control. From the smallest components up to +400mt heavy lifts, we monitor the entire life cycle of every single product that passes through our warehouses or marshalling yards.

Besides quantity we also assure quality and keep your product compliant by taking care of all preservation measures when required.

## Packing & Crating

Consolidating at a packing center delivers the following significant advantages:

- Compliant packing specs throughout the entire project versus packing by the extensive supplier base.
- Volume optimization by consolidation.
- Stronger corporate branding.
- Picking & Packing, labelling, assembly

## Reverse Logistics

For our OEM customers, Aprojects has integrated a ReverseFor our OEM customers, Aprojects has integrated a Reverse Logistic platform where temporary support products or packing is returned to the supplier base. Saving tremendous manufacturing charges and waste materials.

All materials are designed, manufactured, maintained and preserved by Aprojects. Logistic platform where temporary support products or packing is returned to the supplier base. Saving tremendous manufacturing charges and waste materials. All materials are designed, manufactured, maintained and preserved by Aprojects.

## Kitting

Through our global warehouses we provide kitting services direct to the end customer , ranging from the smallest component to the largest of construction. From bolts and nuts to entire gearboxes for the wind industry, this service comprises picking and packing, assembly, labelling, bagging, wrapping. Customers are constantly advised about stock management. Improve productivity and reduce labour cost. Reduce inventory and improve cash flow



## **Pre-Clearance & Filings**

Our customs experts will take good care of your custom documents, taking into account local customs formalities. From local filings, pre-clearance up to export documents and all forms, we have you covered.

## **Customs Compliance Helpdesk**

Customs experts are on standby and ready to support you with any question you might have on import and export formalities. We provide custom mapping for cargo flows and projects prior to execution to mitigate risk and challenges, thus reducing logistical lead time and overall charges.

## **Online Customs Processing**

As customs broker, our experienced staff are real time connected with custom IT platforms providing a swift and accurate service, resulting in a smooth logistical process.

# Sustainability



As global service providers we embrace our responsibility towards sustainable management. Through our global solutions we develop and maintain Lean & Green programmes through and with our customers.

## We care about people

Our employees are the engine of the company. Creating a safe working environment and ensuring the professional development of our people is top priority No. 1.

## We care about our planet.

Climate change is real. We are shifting up a gear to be carbon neutral by mid-century. Air quality and biodiversity is what we want.

## We care about fair-trade.

We are the pioneer of responsible international trade through our innovative and sustainable logistics services. We set the example.

## Responsibility

Working sustainably with added value for our customers, employees, investors and communities is indispensable to us. Therefore, we are committed to questioning and optimizing sustainability in all our actions. Sustainability is the key to a valuable future. A future where we want to succeed together, with our entire projects community.

Sustainability is the responsibility of everyone in our company structure and is independent of rank or position. Only a joint effort can contribute to long-term success and optimal returns for our customers.

This is why we put sustainability at the forefront of all our corporate goals. This goes from our own workplace, to our marketplace as well as our overall responsibility for the environment.



### The People

The success of our company is the result of talented employees with expertise and experience. Proper selection procedures and the provision of future-oriented career opportunities is essential within our business strategy

### Value Chain

Building close cooperative relationships with our suppliers is crucial. Only in this way can our services meet the needs of both our own company, but especially the needs of our customers.

### The Environment

The environment is the foundation for and healthy future of our company. From our office, to our warehouses, to effective transportation, attention to the environment is always at the forefront.

# Our global offices

